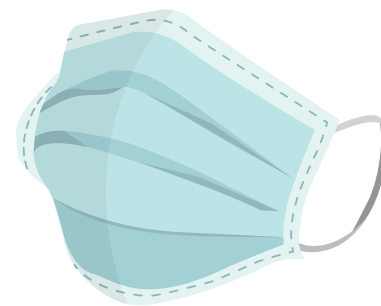


# Universal Masking:

## A Guide for Patients & Visitors



Both Kentucky and Ohio regulations require that everyone wear a mask or face covering while in a healthcare facility. This is called “universal masking.” Wearing a mask helps reduce the spread of the virus that causes COVID-19 by containing droplets that are produced when talking, laughing, sneezing, coughing and even breathing.

**Masks/face coverings are not optional. They are required by law.**

King’s Daughters permits patients and visitors to wear either a cloth face covering or a procedural/isolation mask while in our facilities. If you do not have a face mask, we will provide one. The mask/face covering must completely cover your nose, mouth and chin at all times and remain in place the entire time you are with us unless removed for an exam or procedure.

### Inpatients

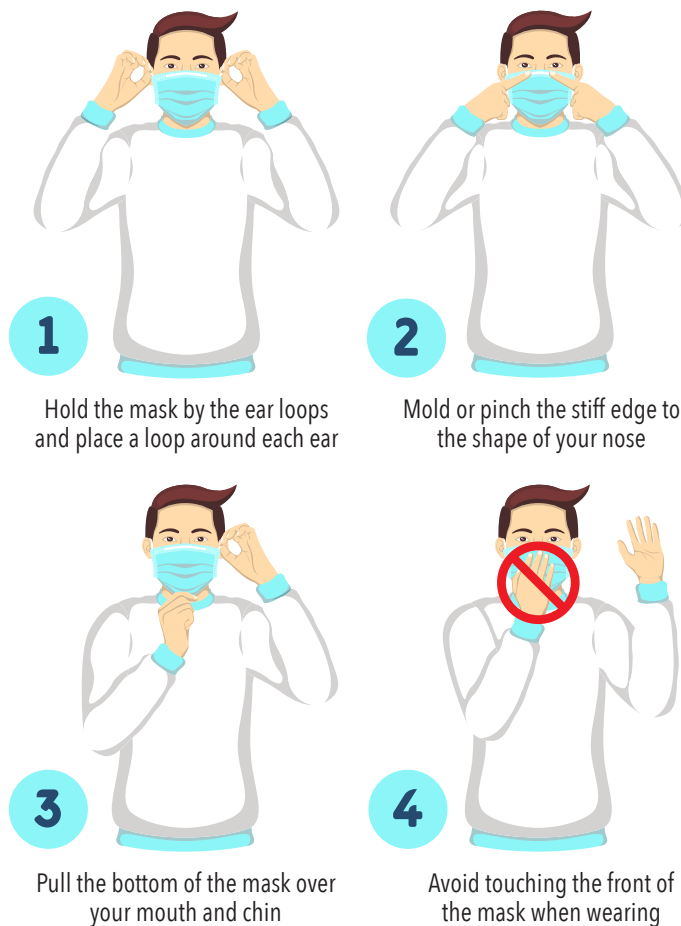
Patients who have been admitted to the hospital and are in a private room may remove their masks when in the room alone. However, should someone enter the room (visitor, nurse, physician or other healthcare personnel), everyone must wear a mask.

- Patients and visitors are required to wear a mask if they leave the room for any reason.
- Masks may be stored in a paper bag or envelope when not in use. Be sure to fold your mask with the outside facing inward. Do not store your mask in a sealed plastic bag. Do not share your mask with anyone else.
- Be sure to put your mask on with the outside facing outward. Do not touch the front of your mask. You may make fit adjustments by pulling up or down from the top or bottom of the mask. If for some reason you touch the front of your mask, wash or sanitize your hands immediately.
- Masks can be reused unless they become soiled or torn. Please let your nurse know if you need a new mask.

**If you are being seen in or visiting an outpatient area**, such as your doctor’s office, imaging center or physical therapy, your mask or face covering must remain in place at all times, unless it is necessary to remove it for an exam or procedure. If you are accompanied by a support person, they also are required to wear a mask at all times while in the facility.

If you do not have a mask/face covering, one will be provided.

We appreciate your cooperation. If you have any questions, please ask.



1

Hold the mask by the ear loops and place a loop around each ear

2

Mold or pinch the stiff edge to the shape of your nose

3

Pull the bottom of the mask over your mouth and chin

4

Avoid touching the front of the mask when wearing

**KING'S  
DAUGHTERS**